



5 Burden Drive, Riverdown Park, Salisbury, Wiltshire, SP1 3QG

£975 PCM

About The Property

Accommodation comprises:

A modern and well-presented one-bedroom first-floor apartment offering bright, spacious living throughout, accessible through the communal front door.

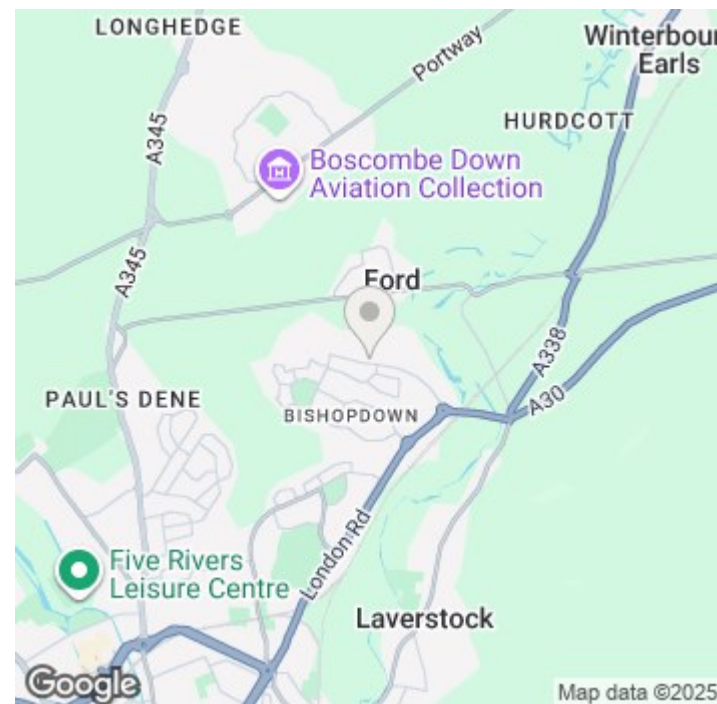
The property features a generous open-plan kitchen/living area, with the kitchen fitted with contemporary units, ample storage, integrated appliances and good counter space. The living area provides plenty of room for both relaxation and dining, with a large window and door allowing natural light to flow through..

A well-proportioned double bedroom and a stylish bathroom complete the internal layout. The flat benefits from neutral decor, allocated parking and sits within the well-kept bishopdown development.

- First floor apartment
- One double bedroom
- En suite shower room
- Open plan fitted kitchen into lounge area
- Allocated parking space
- Gas fired central heating
- Outskirts of the city
- Modern kitchen space



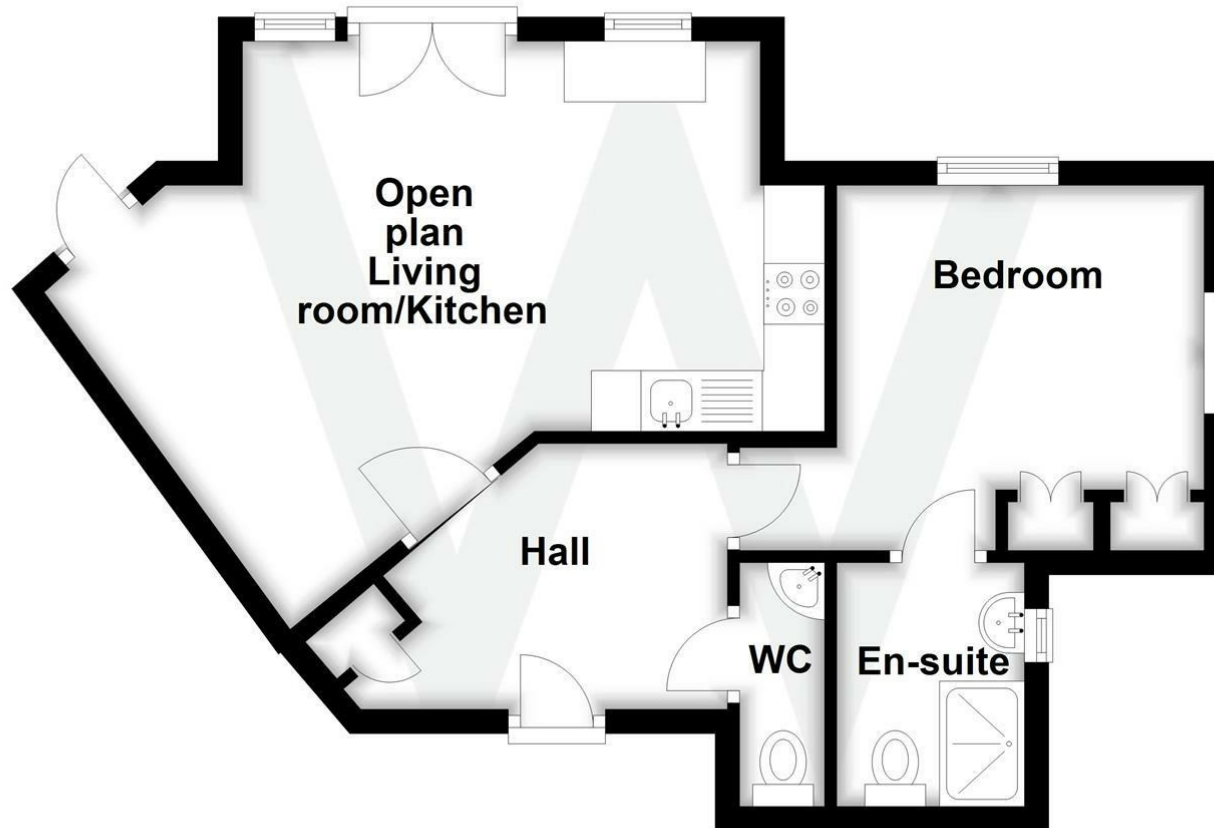
446.00 sq ft





First Floor

Approx. 41.4 sq. metres (446.1 sq. feet)



Total area: approx. 41.4 sq. metres (446.1 sq. feet)

Further Information

Let available date: 16th January 2026
NB: This date is provisional and will only be confirmed once referencing has been successfully completed.

Property type: Apartment

Furnish type: Unfurnished

Deposit: £1,125

Local authority: Wiltshire Council

Council Tax: Band A

EPC: B(83)

Energy Efficiency Rating

	Current	Potential
Very energy efficient - lower running costs		
(92 plus) A		
(81-91) B	83	83
(69-80) C		
(55-68) D		
(39-54) E		
(21-38) F		
(1-20) G		
Not energy efficient - higher running costs		
England & Wales		EU Directive 2002/91/EC 